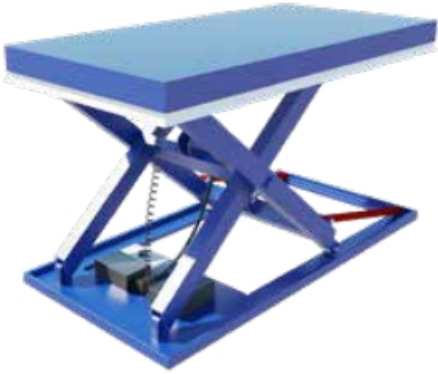


ACCESSORIES AND OTHER PRODUCTS

PROMStahl is focused on safety and efficiency. With that in mind, we aim to provide every product necessary to make the loading bay fully functional and safe. We have a wide range of accessories including dock bumpers, wheel guides, bollards and docking lights to name just a few.

Accessories and other products

PSH - Scissor Lift



The PSH scissor lift is used on loading ramps for loading and unloading vehicles. It compensates for the difference in height between the vehicle and the loading ramp. The PSH is available as a single-scissor or double-scissor system. The robustness of the PSH makes it an excellent choice when comparing the price to performance ratio. Extremely high elevations can be reached by providing the lift platform with several scissor packages. The vertical double-scissor lift, for example, can be used as a working platform, installation table or machinery platform.

PAR/PARP - Mobile Yard Ramp



The mobile yard ramps are part of PROMStahl's wide product range. They offer the possibility of loading and unloading trucks, containers or wagons directly from yard level. The whole maneuvering and loading process can be managed by just one person. The ramps are made of robust welded steel and the whole driving range consists of stable grids that are optimally dimensioned and suited for heavy loads. For accident prevention the ramp is equipped with lateral protection bars on the left and right side. The mobile yard ramp is available in its standard version (type PAR) or with an additional horizontal platform (type PARP). For loading and unloading of high loads the PARP version is recommended with the forklift truck safely entering the lorry via the horizontal part of the ramp.

Buffers PBGP, PGF, PEHD, PGB, PGV, PGFS, PGS, PZPS



Buffers are used to absorb the impact of the vehicle at the time of docking to help prevent damage to the dock and vehicle when the vehicle reverses into the loading bay. You can choose from a wide range of buffers:

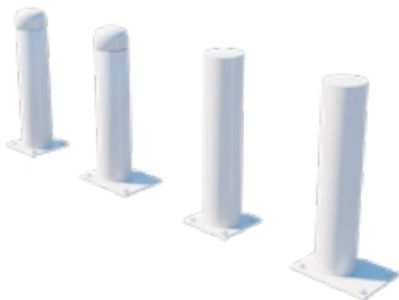
- PBGP – rubber buffer without steel plate
- PGF – fixed-position rubber buffer
- PEHD – polyethylene buffers
- PGB – floating rubber buffers
- PGV – height-adjustable rubber buffers
- PGFS – rubber buffer with protective housing
- PGS – steel spring buffer
- PZPS – fixed position rubber buffers

Accessories and other products



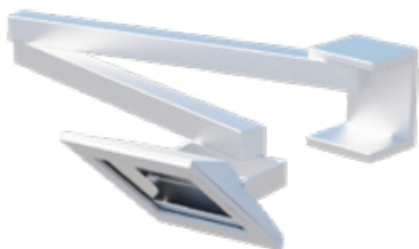
Wheel Guides PEF/PEFE, PEK/PEKE

PROMStahl wheel guides guarantee precise dock-in at the loading bay and avoid expensive damage to dock shelters, levellers, buildings and to the vehicles caused by imprecise docking processes. Thanks to the wheel guides' smooth surface the vehicles' tyres and wheel rims are not subject to any damage. The wheel guides help the truck driver to reverse to the loading bay without requiring any complicated manoeuvring actions. They are installed at yard level, either by being cast into the concrete (types PEK and PEKE) or by being bolted into the ground (flanged version, type PEF and PEFE) and represent a good and reasonable investment in the safety at your loading bay.



PAFP - Steel Bollards

PROMStahl PAFP bollards are a simple, durable and inexpensive way to limit and secure roads and passage ways. Thanks to their high-stability structure, these bollards may be used as an effective means to protect machines, racks, pillars or building corners against vehicle collisions. All protection bollards are stable, hot-dip galvanized steel structures which are also available with an additional safety paint (yellow and black). They can be used inside and outside. PROMStahl bollards can be safely fixed either by casting them directly into concrete or by bolting them to the ground.



PV Dock Lights (PV02, PV05, PV07)

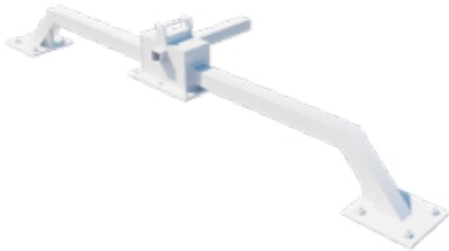
In general, the danger of accidents during loading and unloading is very high due to bad lighting of the docking area. PROMStahl dock lights offer the best solution for perfect lighting of the docking area and the vehicle bed.

Accessories and other products



PZK - Steel Wheel Chock

The PZK wheel chock is equipped with a position-dependent ultrasonic sensor and connected to the control unit via a robust cable. This product guarantees safety during the whole loading and unloading process. As soon as one of the rear wheels of the lorry is blocked by the wheel chock, the leveller control function is “released” so that operation of the dock leveller can be started.



GuardBLOCK

The manual vehicle restraint system Guard Block optimizes safety during the loading and unloading process. The Guard Block consists of a fixed section anchored to the ground, a mobile section for proper vehicle positioning and locking, and an electromechanical section with external traffic lights for signal processing and signaling. This system eliminates the risk of vehicles leaving the docking station accidentally during loading or unloading. The blocking unit is equipped with a sensor and connected to the dock leveller control unit by means of a resistant cable. The dock leveller is released for loading or unloading only after activation of the vehicle restraint system. Furthermore, a special mechanism prevents the deactivation of the blocking system until completion of the loading or unloading process.



PBEA - Traffic Lights

Internal and external traffic lights are a good product to complete the safety of the loading dock. It is recommended to provide the loading dock not only with a wheel chock but also with a traffic lights system. The PBEA traffic lights systems assure communication between the vehicle driver and the warehouse staff. They show the driver when the loading dock can be approached and left safely. The traffic lights are connected to the PROMStahl control unit and adjustments/programming can be adapted to suit your individual requirements.